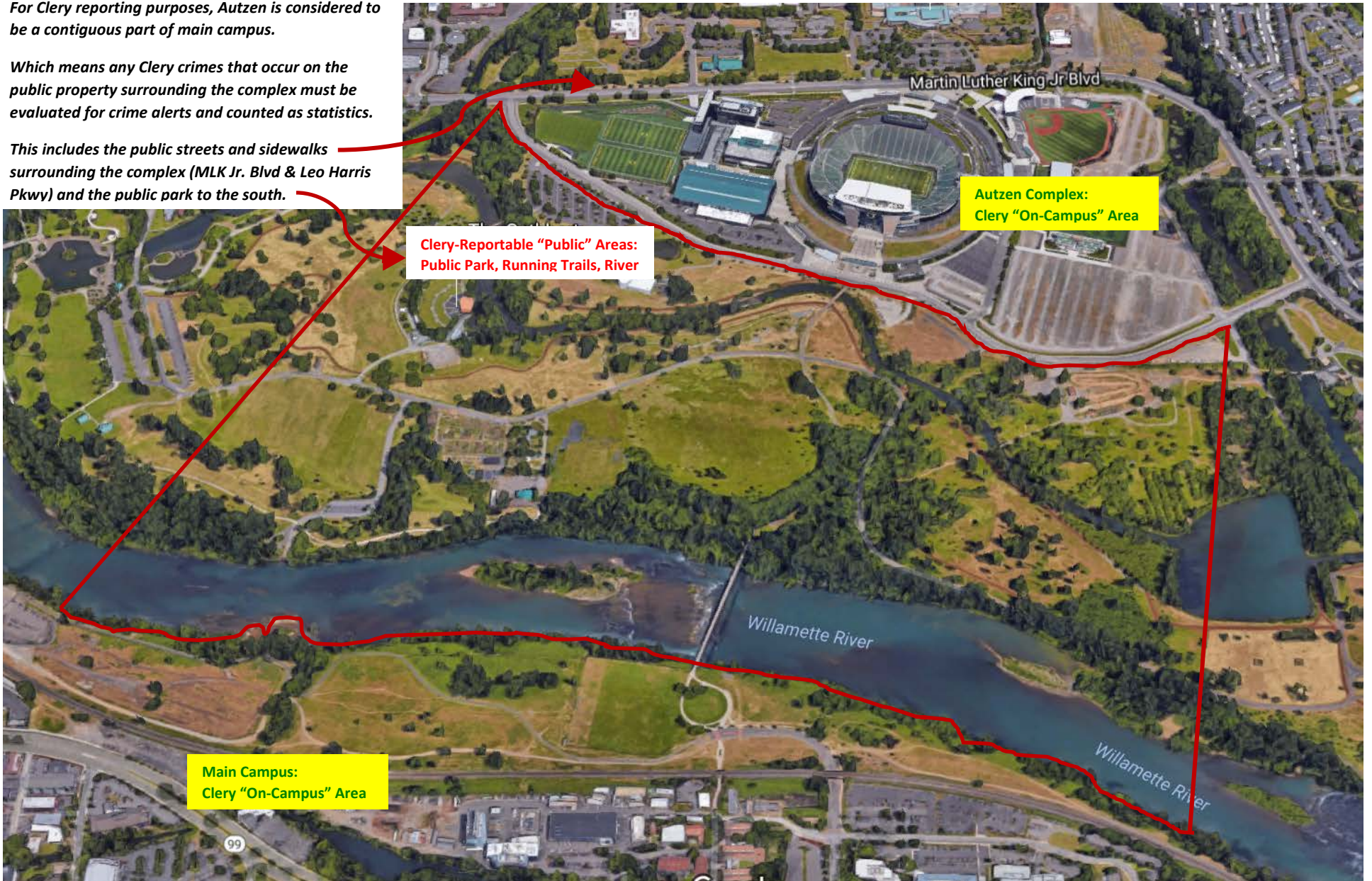


For Clery reporting purposes, Autzen is considered to be a contiguous part of main campus.

Which means any Clery crimes that occur on the public property surrounding the complex must be evaluated for crime alerts and counted as statistics.

This includes the public streets and sidewalks surrounding the complex (MLK Jr. Blvd & Leo Harris Pkwy) and the public park to the south.



Martin Luther King Jr Blvd

Autzen Complex:
Clery "On-Campus" Area

Clery-Reportable "Public" Areas:
Public Park, Running Trails, River

Main Campus:
Clery "On-Campus" Area

Willamette River

Willamette River

99